

## Late Roman Tableware from Argamum – “Faleză Est” Sector. Phocaeen Ware

Marian MOCANU<sup>1</sup>

**Abstract.** *In this article it is analysed the pottery produced in Phocaeen workshops, discovered in the “Faleză Est” sector of the late Roman fortress Argamum. The forms identified are H 1, H 2, H 3, H 4, H 5, H 8 and H 10. Most common of all by far is the form H 3. Chronologically, the studied ceramic group dates between the middle of the 4th century and the third quarter of the 7th century.*

**Rezumat.** *În acest articol este analizată ceramica de masa produsă în atelierele din Phocaea, descoperită în sectorul “Faleză Est” al cetății romane târzii Argamum. Formele identificate sunt H 1, H 2, H 3, H 4, H 5, H 8 și H 10. Cea mai numeroasă dintre toate este de departe forma H 3. Din punct de vedere cronologic, grupul ceramic studiat este datat între jumătatea secolului al IV-lea și al treilea sfert al secolului al VII-lea.*

**Keywords:** Phocaeen Red Slip Ware, Argamum, Scythia, Western Black Sea.

We continue the analysis of the potter-sherds from Argamum discovered in the “Faleză Est” sector with the Phocaeen tableware (Figure 1). Known in the literature as “Late Roman C”, Phocaeen tableware is widespread in the western Black Sea, especially in the 5th and 6th centuries, and Argamum is no exception. The ceramic group from the “Central Sector” of the late Roman fort at Argamum revealed that for the chronological interval mentioned above, the phocaene wares represents 80 per cent of the total tableware<sup>2</sup>.

Following the processing of ceramic group found in the “Faleză Est” sector, we identified 109 typical ceramic fragments from the Phocaeen area, to which we added six fragmentary plates with stamped decoration. If we take into consideration the entire sample of tableware from “Faleză Est”, presented before, we can see the apparent predominance of this type of pottery.

The first identified form is H 1, variant B, with a single specimen, to which is added another belonging to the variant H 1D (Figure 2/1–2). The bowls specific to the H 1 form appear in a series of archaeological sites in the West-pontic space, such as Halmyris. Here ceramic fragments were discovered in archaeological contexts dating from the 4th to the 6th

---

<sup>1</sup> Eco-Museal Research Institute, Tulcea; [marian1054@yahoo.com](mailto:marian1054@yahoo.com).

<sup>2</sup> MOCANU 2018, 340 and graph 4.

centuries. However, most of them are from archaeological contexts dated back to 5<sup>th</sup> century<sup>3</sup>. In Histria this type of pottery is known both from recent research in the Acropolis Centre-south Sector<sup>4</sup> and from the archaeological excavations of the second half of the 20<sup>th</sup> century<sup>5</sup>. Aegyssus is another settlement in which was attested the presence of the H 1 form, whereas a result of the excavations of the 70s of the 20<sup>th</sup> century we know eight specimens, classified in variants A, B and C<sup>6</sup>. Other two sites where this type of tableware is present are Topraichioi<sup>7</sup> and Ibida, in the Extra-Muros West III<sup>8</sup> and Extra-Muros North I<sup>9</sup> sectors. At Argamum, in addition to these two pottery-shreds identified in the “Faleză Est” sector, are added two others from the “Central Sector” of the late Roman fort<sup>10</sup>. The phocaeen form H 1 with the H 4 form produced at Çandarlı is sometimes entangled in West-pontic area, because the H 1 form is considered the successor of the pergamenian one.

The following form produced in the Phocaeen workshops, present in the studied pottery group is H 2C (Figure 2/3). This type of bowls is specific to the 5<sup>th</sup> century, and was widespread in the Mediterranean basin, but also entered the Black Sea. In the province of Scythia, the H 2 form is present in Histria, in the Acropolis Central-South sector and is dating to archaeological contexts from the beginning of the 5<sup>th</sup> century<sup>11</sup>. Form H 2 also appears in the late Roman settlement of Halmyris. Following the excavations of the '80s of the 20<sup>th</sup> century, were inventoried three ceramic fragments attributed to archaeological levels 7 and 8, thus dating in the second half of the 4<sup>th</sup> century and the first half of the 5<sup>th</sup> century<sup>12</sup>. Following the study of tableware discovered between 2006 and 2014 it is being identified five other specimens<sup>13</sup>. The H 2 form is present on the Danube limes in the forts from Capidava<sup>14</sup> or Aegyssus<sup>15</sup>. Inland the province of Scythia, the H 2 form appears at the fortress from Tropaeum Traiani<sup>16</sup> and at Ibida<sup>17</sup>.

<sup>3</sup> TOPOLEANU 2000, 44–45, Pl. 1/8–9, Pl. 2/10–18. MOCANU 2018A, 238–239, Fig. 6/1–5.

<sup>4</sup> BĂDESCU, ILIESCU 2016, 142–143, Fig. 1–2; ILIESCU *et alii* 2017, 47–49, Fig. 1–3.

<sup>5</sup> SUCEVEANU 1982, 84, no. 1–2, Fig. 7/1–2 (Level IIIA – last quarter of the 4<sup>th</sup>–first half of the 5<sup>th</sup> centuries).

<sup>6</sup> MOCANU, NUȚU 2017, 131–132, Fig. 7/3.

<sup>7</sup> OPAIȚ 1996, 137, Pl. 56/11, 13.

<sup>8</sup> MOCANU 2011, 232, Pl. 2/10.

<sup>9</sup> MOCANU 2014, 154, Fig. 4/17.

<sup>10</sup> MOCANU 2018, 339, Fig. 2/18–19.

<sup>11</sup> BĂDESCU, ILIESCU 2016, 144–145, Fig. 5/2–3; ILIESCU *et alii* 2017, 51–52, Fig. 7/1–4.

<sup>12</sup> TOPOLEANU 2000, 46, Pl. 2/19, pl. 3/20. No. 20 is in fact a Pontic Red Slip Form 3 dish.

<sup>13</sup> MOCANU 2018A, 239, Fig. 6/6–8.

<sup>14</sup> OPRIȘ 2003, 150, Pl. 54/354.

<sup>15</sup> MOCANU, NUȚU 2017, 132, fig. 7/4–5.

<sup>16</sup> BOGDAN-CĂTĂNCIU, BARNEA 1979, 187, Fig. 160/2.

<sup>17</sup> MOCANU 2014, 154, Fig. 4/19; MOCANU 2011, 232, Pl. 2/12.

Form H 3 is by far the most representative product of Phocaeen workshops, not only in the particular case of Argamum, but in the entire West-Pontic region<sup>18</sup>. All the eight variants of this type of dish /bowl are identified in the ceramic group discovered in the “Faleză Est” sector. The two pottery-shreds that have classified as H 3A are a late variant (H 3A / C variant), the transition from the classic A variant to the C variant (Figure 2/4–5). These ceramic fragments represent the first attestation of the H 3A form at Argamum, because in the “Central Sector” the earliest is the H 3B form. In the “Faleză Est” sector, it is being classified six ceramic fragments in the form H 3B (Figure 2/6–8) and seven each in the types H 3C (Figure 2/9–11) and H 3D (Figure 2/12; Figure 3/13–14). All these forms dated to the second half of the 5<sup>th</sup> century. For the end of the 5<sup>th</sup> century and the beginning of the 6<sup>th</sup> century, the specific form is H 3E (Figure 3/15–21), with 21 ceramic fragments. The forms from the first half of the 6<sup>th</sup> century are: H 3F (Figure 3/22–24; Figure 4/25–28) with 22 pottery-shreds, H 3G (Figure 4/29) with two fragments and H 3H (Figure 4/30–33) with 11 ceramic fragments. In the “Faleză Est” sector, a total of 78 ceramic fragments were discovered belonging to the H 3 form.

In the Black Sea basin the H 4 form founds in minimal numbers (Figure 4/34). Its existence has certified in Halmyris<sup>19</sup> and Ibida<sup>20</sup>. In the fortress from Argamum, up to now a single ceramic fragment has discovered in the “Faleză Est” sector. The H 4 plates are framed in the early stages of the Phocaeen workshops, dating to the second half of the 4<sup>th</sup> century.

Another type of bowls rarely found in this geographical region are those specific to form H 5 (Figure 4/35). The four ceramic fragments studied for this article are the only ones of this kind from Argamum, discovered until today, and most probably dated in the second half of the 5<sup>th</sup> century. Apart from Argamum, other late Roman archaeological sites in Scythia where the presence of the H 5 form reported are Halmyris<sup>21</sup>, Histria<sup>22</sup> or Ibida<sup>23</sup>.

A ceramic fragment it is classified in the form H 8 (Figure 4/36). As well as the forms H 4 and H 5 this type of bowls it is extremely rarely spread in the west-pontic area. Analogies are identified in the fortifications from Histria<sup>24</sup>, Topraichioi<sup>25</sup>, Halmyris<sup>26</sup> or Ibida<sup>27</sup>. The H8 bowls it is dated in the second half of the 5<sup>th</sup> century and the first half of the 6<sup>th</sup> century.

---

<sup>18</sup> ILIESCU *et alii* 2017, 52–54, Pl. 7/5–7, Pl. 8–10; RAȚIU, OPRIȘ, DUCA 2017, 215–217, Pl. 4/10–12, Pl. 5–7; BĂDESCU, ILIESCU 2016, 145–147, Fig. 5/4–11, Fig. 6; MOCANU 2011, 232–240, Pl. 3–7; GĂMUREAC 2009, 265–266, Pl. 11/103–104, Pl. 12/105–106; TOPOLEANU 2000, 46–54, Pl. 3/21–30, Pl. 4–7/62–65.

<sup>19</sup> TOPOLEANU 2000, 56, Pl. 8/73–74.

<sup>20</sup> MOCANU 2014, 157, Fig. 4/31.

<sup>21</sup> MOCANU 2018a, 245, Fig. 9/20; TOPOLEANU 2000, 59–60, Pl. 9–10/94–98.

<sup>22</sup> SUCEVEANU 1982, 92, no. 24, Fig. 11/24.

<sup>23</sup> MOCANU 2014, 158, Fig. 5/32.

<sup>24</sup> ILIESCU *et alii* 2017, 56, Pl. 12/3.

<sup>25</sup> OPAIȚ 1996, 138, Pl. 58/5.

<sup>26</sup> TOPOLEANU 2000, 59–60, Pl. 10/94–97, Pl. 11/98.

<sup>27</sup> MOCANU 2011, 240, 90–92, Pl. 8/90–92.

The last and latest form produced in Phocaean workshops, discovered in the “Faleză Est” sector, is H 10. Within the studied ceramic group were identified all three specific variants of this form. Fourteen ceramic fragments are classified as H 10A (Figure 4/37-38; Figure 5/39-40), 12 are H 10B (Figure 5/41-43), and five are H 10C (Figure 5/44-45). The H 10 form is specific to the chronological interval between the second half of the sixth century and the first half of the seventh century. Unlike the H 3 form that is present in all the late Roman fortresses of the western-pontic area, form 10 is found in significant quantities, especially in the settlements on the Black Sea shore-line, the best-known examples being Histria<sup>28</sup> or Halmyris<sup>29</sup>. From H 10 is also found in sites inland the province of Scythia, but in smaller quantities<sup>30</sup>.

Following the archaeological excavations in the “Faleză Est” sector, six Phocaean ceramic fragments with stamped decoration were unearthed (Figure 5). The decoration can be classified as geometric and vegetal, zoomorphic or paleo-Christian motifs. The geometric and vegetal motifs identified are the lozenge with volutes alternating with the kantharos. These stamps are arranged circularly around the centre of the plate-floor. The stamps are medium in size and with a high degree of usage. In the West-Pontic area, the motif of the kantharos is known on ceramic fragments discovered at Histria<sup>31</sup>, Tomis<sup>32</sup> and Ibida<sup>33</sup>, and the lozenge with volutes were attested at Halmyris<sup>34</sup> and Tomis<sup>35</sup>. This combination of decorative motifs can be dated back to the second half of the 5th century.

The following stamp shows a decorative motif in the form of “S” with a double outline. Like the previous one and this one is specific to the second half of the 5th century. The analogies known in the western Black Sea come from Ibida<sup>36</sup>, Halmyris<sup>37</sup>, Tomis<sup>38</sup> and Histria<sup>39</sup>. The last geometric decorative motif is a double outlined diamond and a stylized cross placed above. In Scythia, it is less known, unlike previous decorative motifs. The only known analogy comes from the ancient archaeological excavations at Histria<sup>40</sup>. This type of decoration style is specific to the second half of the 5th century. With stamps depicting running rabbits, with their heads turned back are decorated two ceramic fragments. These

<sup>28</sup> BĂDESCU, ILIESCU 2016, 148–149, Fig. 8; SUCEVEANU 1982, 99, no. 10–12, Fig. 14/10–12.

<sup>29</sup> MOCANU 2018a, 245–246, Fig. 9/23–25, Fig. 10/1–2; TOPOLEANU 2000, 60–62, Pl. 11/99–106.

<sup>30</sup> OPRÎȘ 2003, 152, Pl. 55/364–370; BOGDAN-CĂTĂNICIU, BARNEA 1979, 189, Fig. 167/2.1.

<sup>31</sup> POPESCU 1965, 701, Fig. 2/9.

<sup>32</sup> PAPUC 1973, 167–168, Fig. 11/1–3.

<sup>33</sup> MOCANU 2011A, 296, Fig. 2/4.

<sup>34</sup> TOPOLEANU 1996, 146, no. 9–10, Pl. 2/9–10.

<sup>35</sup> PAPUC 1963, 160, Fig. 5/1.

<sup>36</sup> MOCANU 2011A, 297, Fig. 3/11.

<sup>37</sup> TOPOLEANU 1996, 145, no. 7, Pl. 2/7.

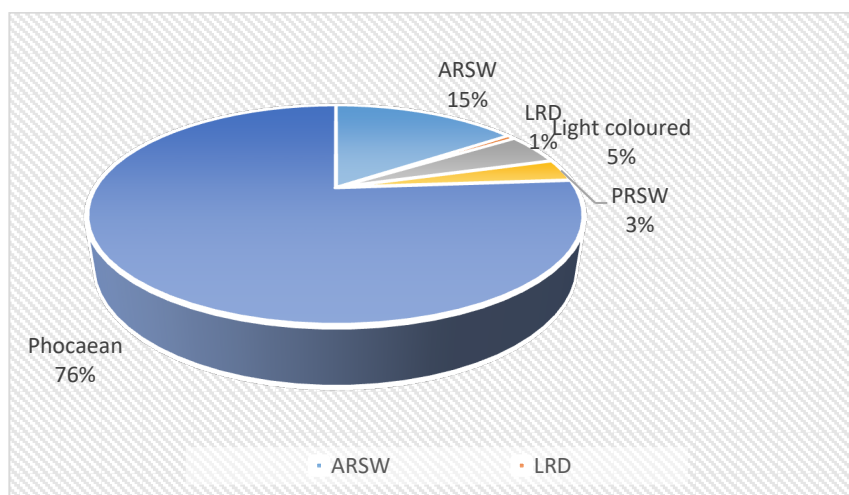
<sup>38</sup> MUNTEANU, PAPUC 1976, 149, Pl. 1/Fig. 3.

<sup>39</sup> POPESCU 1965, 706, Fig. 7/2.

<sup>40</sup> POPESCU 1965, Fig. 11/6.

stamps were executed circularly around the centre of the bowl floor. The decorative motif is specific to the second half of the 5<sup>th</sup> century with useful analogies in Tomis<sup>41</sup>. The only ceramic fragment decorated with paleo Christian motif shows a cross with a double outline. In the centre of the plate floor was executed a large stamp. The way the decoration it is placed, and its dimensions, are specific to the first half of the 6<sup>th</sup> century. The double outlined cross is a stamp widespread in late Roman settlements on the Black Sea littoral, such as Histria<sup>42</sup> and Tomis<sup>43</sup>, but also appears in settlements from the Lower Danube area, in Noviodunum<sup>44</sup> and Ibida<sup>45</sup>.

Quantitative analysis of the Phocaeen tableware group from the “Faleză Est” sector shows that the most common form is H 3F, followed closely by the H 3E form. Other forms with a substantial presence are H 10A and H 10B. At the opposite are the earliest forms, such as H 1B, H1 D or H 4. If we take into account other categories of tableware from “Faleză Est” sector, presented before, we find that the Phocaeen ceramics represent 76% of the total, followed by the North African pottery, with 15%, and the light colored Aegean pottery with 5%. At the opposite are the Pontic pottery with 3% and the Cypriot ceramics with only one percentage (Graph 1). Compared with the group of tableware from the “Central Sector”, the percentage ratio between the main workshops is almost similar, with the amendment that in the “Faleză Est” sector, ceramics from the Aegean and Cyprus appear as new.



Graph 1. Percentage ratio of tableware from “Faleză Est” sector

<sup>41</sup> PAPUC 1973, 161, 176, Fig. 8/4, 7.

<sup>42</sup> POPESCU 1965, 714, Fig. 13/8.

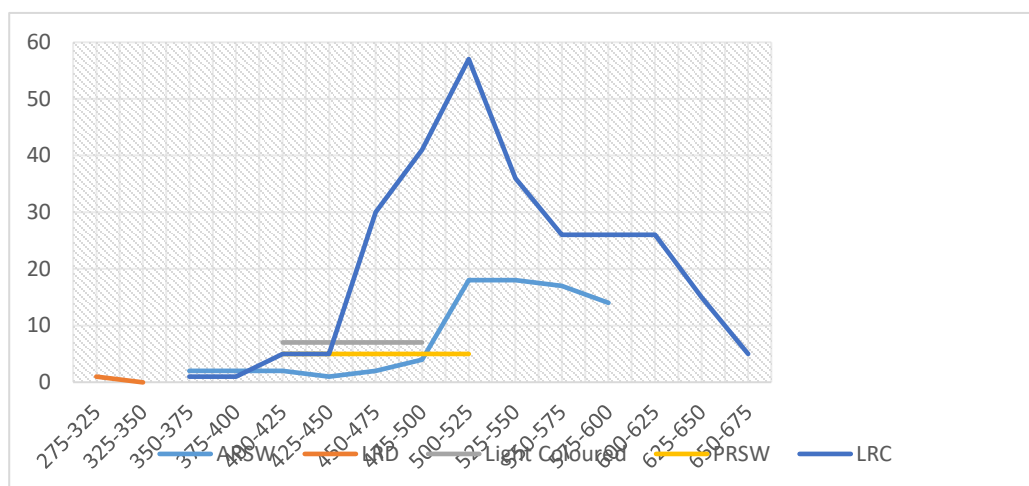
<sup>43</sup> PAPUC 1983, 180, Fig. 24/2.

<sup>44</sup> TOPOLEANU 1984, 192, no. 24, Pl. 5/8, Pl. 10/10.

<sup>45</sup> MOCANU 2011a, 299, Fig. 4/23–24.

Typo-chronologically (Graph 2), the tableware from the “Faleză Est” sector it is framed as follows: a single ceramic fragment (Cypriot – LRD) it can be dated at the end of the 3<sup>rd</sup> century and the beginning of the 4<sup>th</sup> century. Between the middle of the 4<sup>th</sup> century and the middle of the 5<sup>th</sup> century, the quantity of tableware is relatively constant, here framing the early forms imported from North Africa or Phocaea, but also the pottery from the Pontic basin or Aegean. A spectacular increase in the quantity of tableware is present in the middle of the fifth century, thereby the peak being reached in the first quarter of the sixth century. With the middle of the 6<sup>th</sup> century the quantity of tableware begins to gradually decrease, until its disappearance in the third quarter of the 7<sup>th</sup> century.

The typo-chronological evolution of the ceramic group from the “Faleză Est” sector highlights the fact that the researches focused on the latest archaeological levels identified in the late Roman fort from Argamum. At the same time, we can say that the existence of this fortification it has extended in the first three-quarters of the seventh century.



Graph 2. Typo-chronology of tableware from “Faleză Est” sector

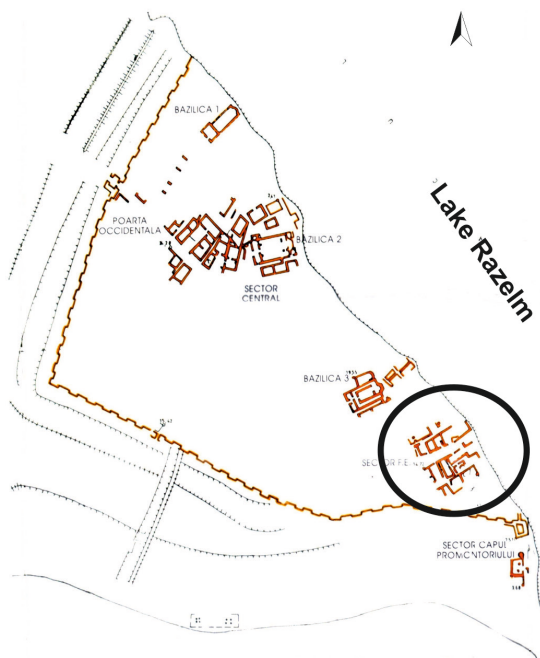
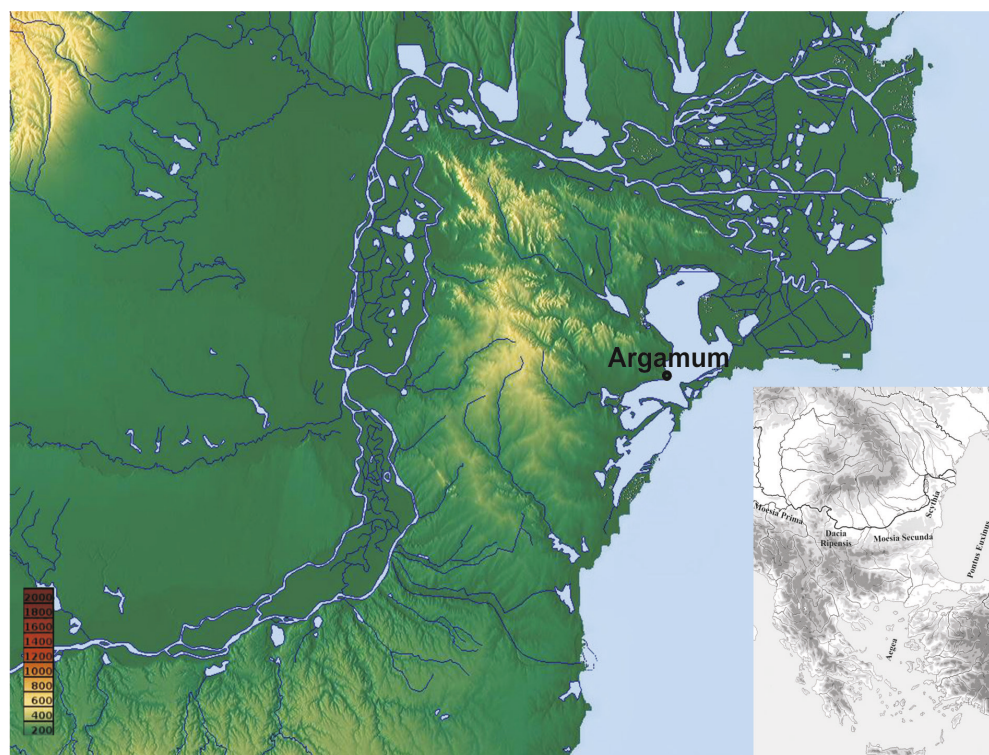


Figure 1. Location and plan of Argamum and Faleză-Est sector

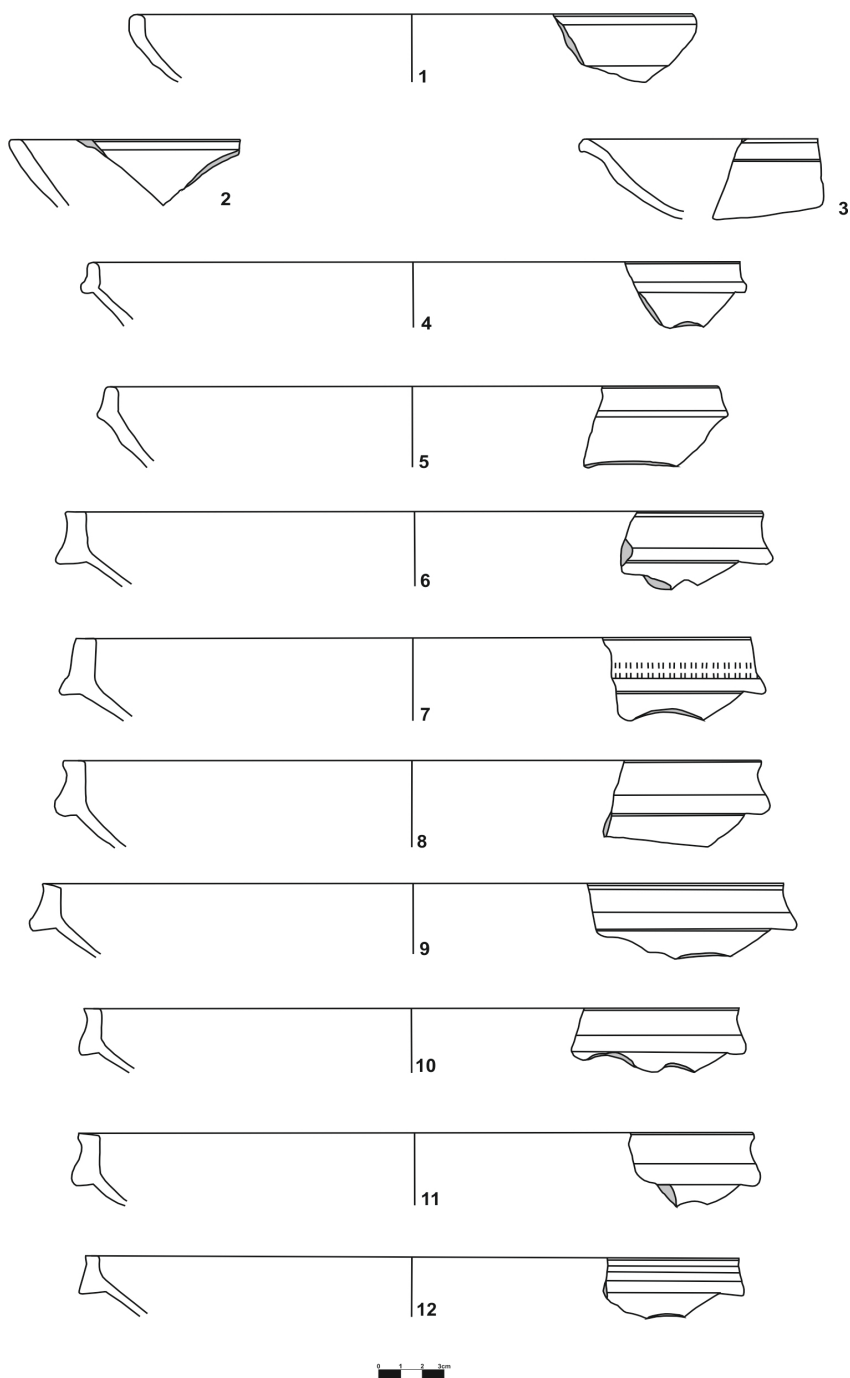


Figure 2. H1, H2C



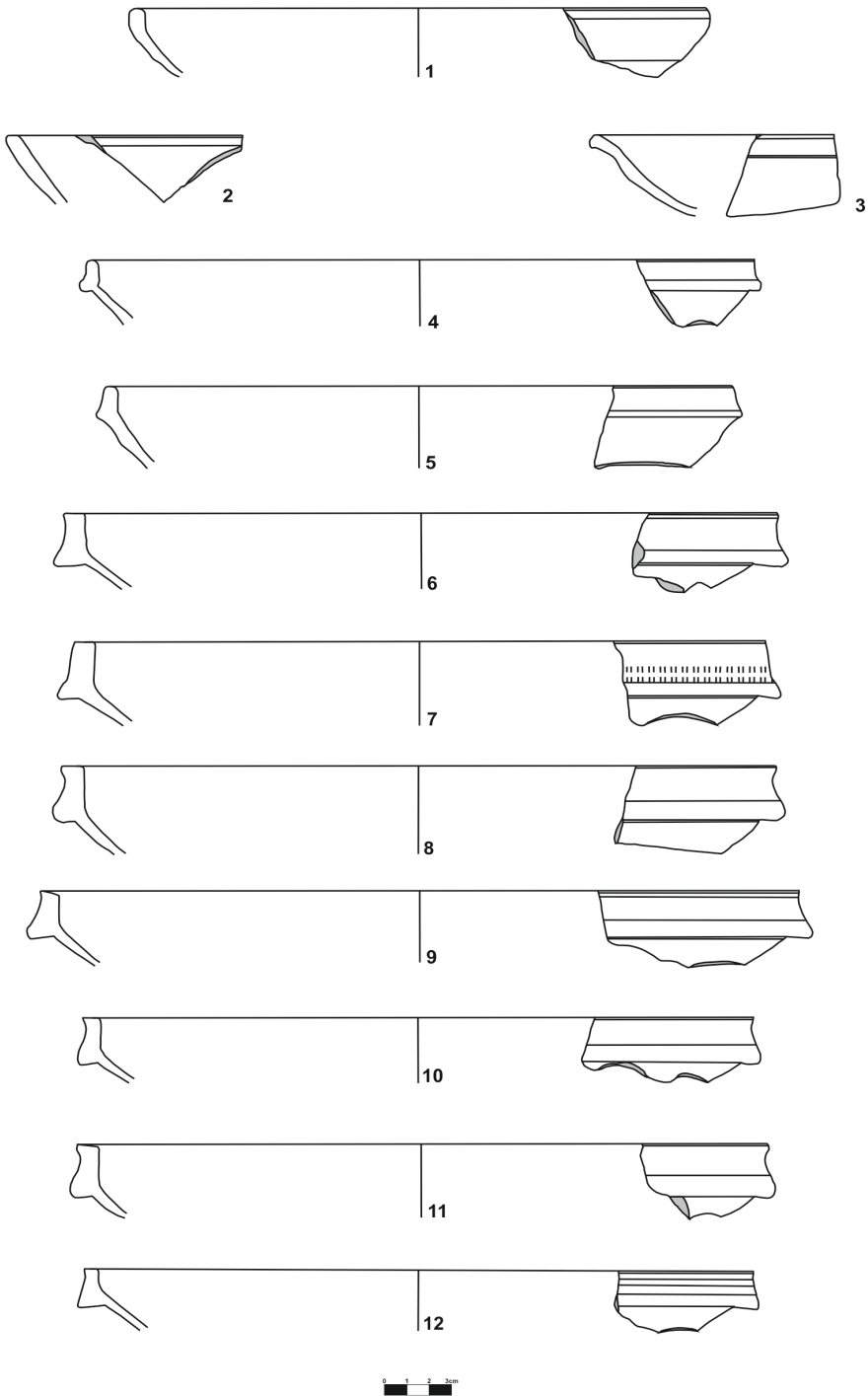


Figure 3.

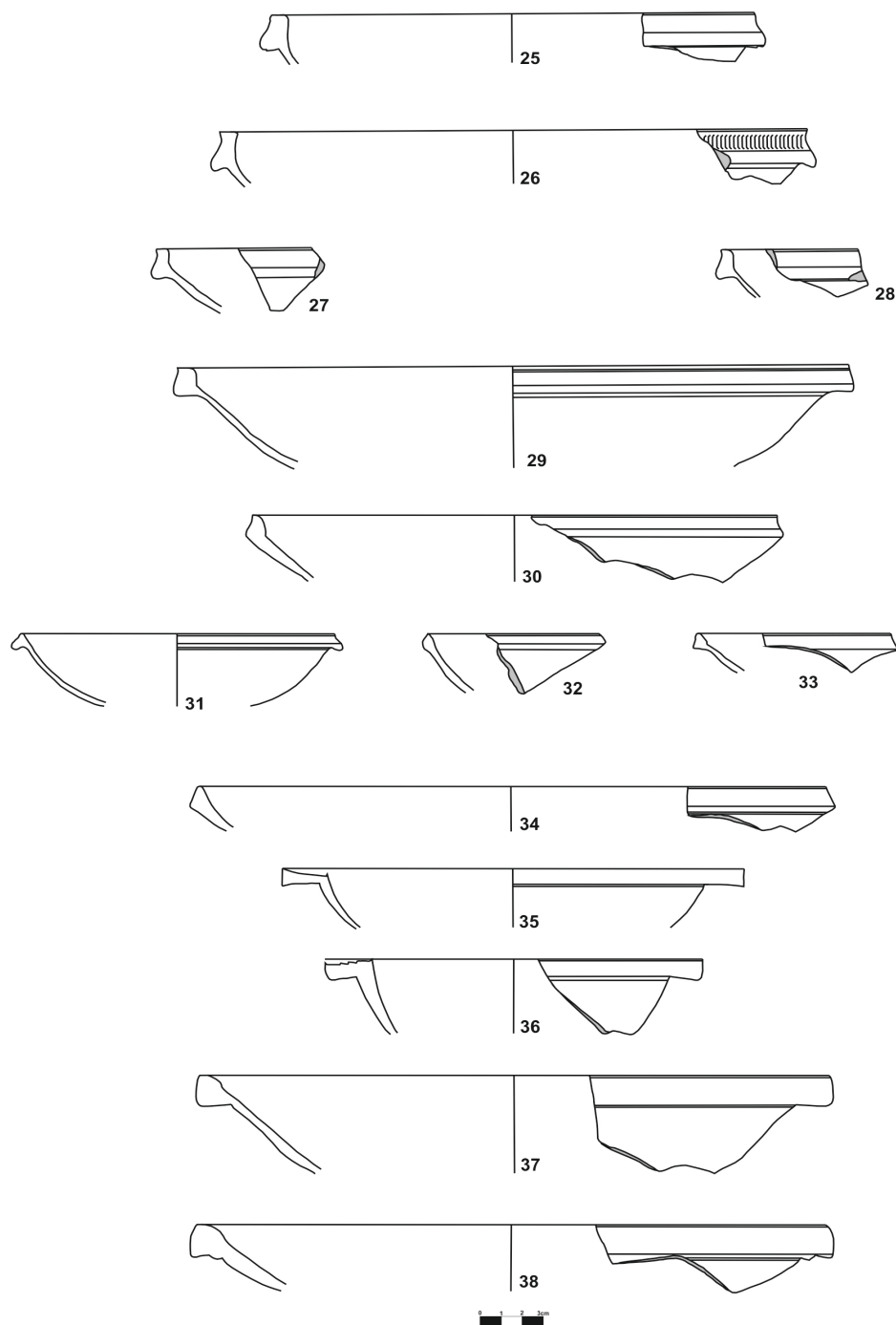


Figure 4.

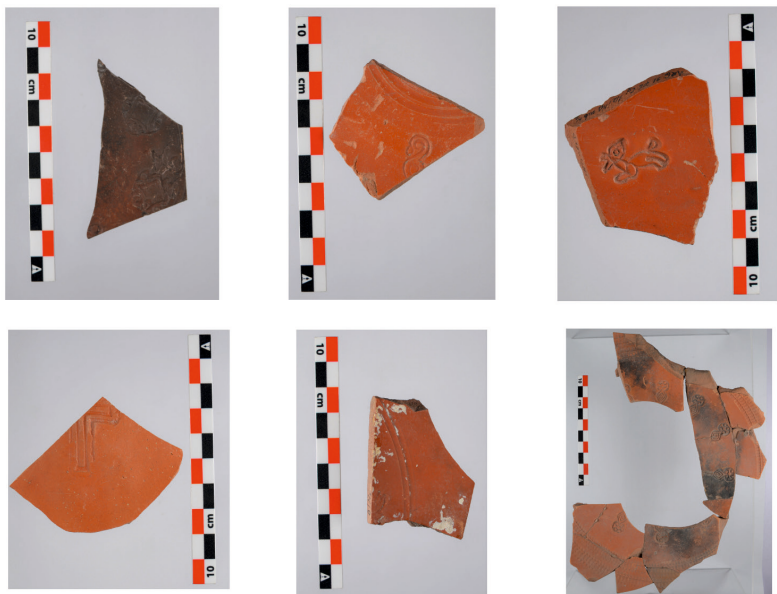
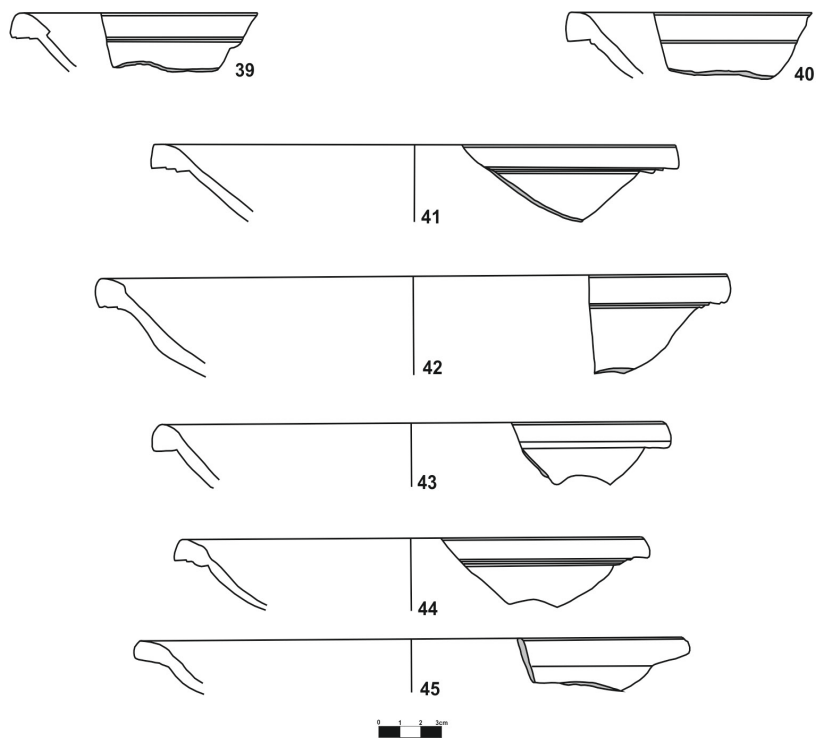


Figure 5.

## Selective Catalogue

### Form H 1B

1. Bowl. Rim fragment and upper part.

Argamum 1996, FE, C14-15, -1.70 m. Dm: 26; Hp: 3.2.

Reddish-brown fabric (2.5 YR 4/8), dark reddish-brown slip (2.5 YR 3/6). Exterior rim is painted black.

### Form H 1D

2. Bowl. Rim fragment and upper part.

Argamum 1981. Dm: undeterminable; Hp: 3.2.

Reddish-brown fabric (2.5 YR 4/6), reddish-brown slip (2.5 YR 4/8). On exterior rim, traces of black paint.

### Form H 2C

3. Small dish. Rim fragment and upper part.

Argamum 1995, FE, C15, -1.50 m. Dm: undeterminable; Hp: 3.9.

Orange fabric (2.5 YR 6/8) with fine limestone particles, slip of same shade.

### Form H 3A/C

4. Dish. Rim fragment and upper part.

Argamum 1983, FE, C21. Dm: 30; Hp: 3.2.

Reddish-brown fabric (5 YR 4/6), orange slip (5 YR 6/6).

5. Dish. Rim fragment and upper part.

Argamum 1981. Dm: 28; Hp: 3.9.

Dull reddish-brown fabric, reddish-brown slip (2.5 YR 4/6).

### Form H 3B

6. Large dish. Rim fragment and upper part.

Argamum 1991, FE, C1/4, -0.85 m. Dm: 32; Hp: 3.6.

Orange fabric (2.5 YR 6/8), orange slip (5 YR 7/8).

7. Large dish. Rim fragment and upper part.

Argamum 1981, FE. Dm: 31; Hp: 4.

Bright brown slip (2.5 YR 5/8), dark reddish-brown slip (5 YR 3/6). Exterior rim has toothed wheel decoration.

8. Large dish. Rim fragment and upper part.

Argamum 2001, FE, C1, -0.90 m. Dm: 32; Hp: 4.2.

Reddish-brown fabric (2.5 YR 4/8), bright brown slip (2.5 YR 5/8).

### Form H 3C

9. Dish. Rim fragment and upper part.

Argamum 1979. Dm: 32; Hp: 3.5.

Bright brown fabric (2.5 YR 5/8), dark reddish-brown slip (2.5 YR 3/4).

10. Dish. Rim fragment and upper part.

Argamum 1991, FE, C7, -0.85 m. Dm: 30; Hp: 3.1.

Orange fabric (2.5 YR 6/8), reddish-brown slip (2.5 YR 4/8).

11. Dish. Rim fragment and upper part.

Argamum 2001, FE, C1, -0.70 m. Dm: 31; Hp: 3.5.

Bright brown fabric (2.5 YR 5/8), reddish-brown slip (2.5 YR 4/8).

### Form H 3D

12. Dish. Rim fragment and upper part.

Argamum 1981. Dm: 30; Hp: 2.9.

Dull reddish-brown fabric (2.5 YR 4/4) with a large quantity of debris, dark reddish-brown slip (2.5 YR 3/6).

13. Dish. Rim fragment and upper part.

Argamum, FE, passim. Dm: 32; Hp: 2.6.

Bright brown fabric (2.5 YR 5/8), orange slip (2.5 YR 6/8). The outer rim is decorated with toothed wheel.

14. Dish. Rim fragment and upper part.

Argamum 2001, FE, C9, -0.70 m. Dm: 29; Hp: 2.1.

Bright brown fabric (2.5 YR 5/6), dark reddish-brown slip (2.5 YR 3/6), with traces of black paint on both sides.

### Form H 3E

15. Dish. Missing floor.

Argamum 2001, FE, C8, -0.40 m. Dm: 23; Hp: 4.5.

Bright brown fabric (2.5 YR 5/8), reddish-brown slip (2.5 YR 4/8).

16. Dish. Rim and upper part.

Argamum 1995, FE, C13, -0.90 m. Dm: 29; Hp: 4.4.

Bright brown fabric (2.5 YR 5/8), reddish-brown slip (2.5 YR 4/8). The exterior rim has toothed wheel decoration.

17. Dish. Missing floor.

Argamum 2001, FE, C8, -0.40 m. Dm: 25; Hp: 3.9.

Bright brown fabric (2.5 YR 5/8) with fine particles of limestone, reddish-brown slip (2.5 YR 4/8).

18. Dish. Rim fragment and upper part.

Argamum, FE, passim. Dm: 28; Hp: 2.2.

Orange fabric (2.5 YR 6/8), bright brown slip (2.5 YR 5/8).

19. Dish. Rim fragment and upper part.

Argamum 1995, FE, C16. Dm: 22; Hp: 2.5.

Orange fabric (5 YR 6/8), orange slip (2.5 YR 6/8).

20. Dish. Rim fragment and upper part.

Argamum 2001, FE, C2, -0.94 m. Dm: 26; Hp: 2.5.

Reddish-brown fabric (2.5 YR 4/8) slip of same shade, the outer rim has toothed wheel decoration.

21. Dish. Rim fragment and upper part.

Argamum 2001, FE, C2, -1.00 m. Dm: 22; Hp: 2.8.

Bright brown fabric (2.5 YR 5/8), reddish-brown slip (2.5 YR 4/8).

#### Form H 3F

22. Dish. Rim fragment and upper part.

Argamum 1991, FE, C2, -0.50 m. Dm: 23; Hp: 2.6.

Dark reddish-brown fabric (5 YR 3/4), brownish-black slip (5 YR 3/1). The exterior rim has toothed wheel decoration.

23. Dish. Rim fragment and upper part.

Argamum 1990, FE. Dm: 26; Hp: 2.8.

Reddish-brown fabric (5 YR 4/6), slip of same shade (5 YR 4/8). The exterior rim is painted black.

24. Dish. Rim fragment and upper part.

Argamum 1981, FE. Dm: 24; Hp: 2.6.

Bright reddish-brown fabric (5 YR 5/8), reddish-brown slip (5 YR 4/8).

25. Dish. Rim fragment and upper part.

Argamum 2001, FE, C8, -0.40 m. Dm: 23; Hp: 2.5.

Orange fabric (2.5 YR 6/8), reddish-brown slip (2.5 YR 4/8).

26. Dish. Rim fragment and upper part.

Argamum 1990, FE. Dm: 28; Hp: 2.7.

Bright brown fabric (2.5 YR 5/8), reddish-brown slip (2.5 YR 4/8). The exterior rim is painted white and toothed wheel decorated.

27. Dish. Rim fragment and upper part.

Argamum, FE, passim. Dm: undeterminable; Hp: 3.3.

Bright brown fabric (2.5 YR 5/8), reddish-brown slip (2.5 YR 4/8). The exterior rim is painted black.

28. Dish. Rim fragment and upper part.

Argamum 1995, FE, C14, -1.35 m. Dm: undeterminable; Hp: 2.4.

Reddish-brown fabric (2.5 YR 4/8), slip of same shade.

#### Form H 3G

29. Large size dish. Missing floor.

Argamum 1995, FE, C4, -0.70 m. Dm: 32; Hp: 5.2.

Reddish-brown fabric (2.5 YR 4/6), dark reddish-brown slip (2.5 YR 3/6). The exterior rim is painted black.

#### Form H 3H

30. Dish. Rim fragment and upper part.

Argamum 1995, FE, C15, -1.50 m. Dm: 25; Hp: 3.4.

Bright brown fabric (2.5 YR 5/8) with some fine particles of limestone, reddish-brown slip (2.5 YR 4/8). The outer rim is painted black.

31. Small size dish. Missing floor.

Argamum 2001, FE, C1, -1.30. Dm: 15; Hp: 3.7.

Brownish-grey fabric (5 YR 4/1), dark reddish-brown slip (5 YR 3/3).

32. Dish. Rim fragment and upper part.

Argamum 1996, FE, C14-15, -1.70 m. Dm: undeterminable; Hp: 4.

Bright brown fabric (2.5 YR 5/8), slip of same shade.

33. Dish. Rim fragment and upper part.

Argamum 1995, FE, C8; -1.15 m. Dm: undeterminable. Hp: 2.

Bright brown fabric (2.5 YR 5/8), reddish-brown slip (2.5 YR 4/8).

#### Form H 4

34. Plate. Rim fragment and upper part.

Argamum 1990, FE, -0.60 m. Dm: 30; Hp: 2.3.

Greyish-brown fabric (5 YR 4/2), dull reddish-brown slip (5 YR 4/4). The exterior rim is painted black.

#### Form H 5

35. Medium size bowl. Missing floor.

Argamum 2001, FE, C8, -0.40 m. Dm: 22; Hp: 4.

Bright brown fabric (2.5 YR 5/8), reddish-brown slip (2.5 YR 4/8).

#### Form H 8

36. Bowl. Rim fragment and upper part.

Argamum 1984, FE. Dm: 18; Hp: 3.8.

Dark reddish-brown fabric (5 YR 3/4), brownish-black slip (5 YR 2/2).

#### Form H 10A

37. Dish. Rim fragment and upper part.

Argamum 1991, FE, C10, -0.60 m. Dm: 30; Hp: 5.

Bright brown fabric (2.5 YR 5/8), reddish-brown slip (2.5 YR 4/8). The outer rim is painted white.

38. Dish. Rim and upper body.

Argamum 1996, FE, C14. Dm: 30; Hp: 3.4

Bright brown fabric (2.5 YR 5/8); reddish-brown slip (2.5 YR 4/8)

39. Dish. Rim fragment and upper wall.

Argamum 2001, FE, C7, -0.45. Dm: undeterminable; Hp: 2.7.

Reddish-brown fabric (2.5 YR 4/6), dark reddish-brown slip (2.5 YR 3/6). The exterior rim is painted in black and white.

40. Dish. Rim fragment and upper wall.

Argamum, FE, passim. Dm: undeterminable; Hp: 3.

Bright reddish-brown fabric (5 YR 5/6), reddish-brown slip (5 YR 4/8).

#### Form H 10B

41. Dish. Rim fragment and upper wall.

Argamum 1987, FE, passim. Dm: 25; Hp: 3.5.

Orange fabric (5 YR 6/8) with some small limestone particles, reddish-brown slip (5 YR 4/8).

42. Dish. Rim fragment and upper wall.

Argamum, FE, passim. Dm: 30; hp: 4.5.

Greyish-brown fabric (5 YR 4/2), dark reddish-brown slip (5 YR 3/4). The outer rim is painted black.

43. Dish. Rim fragment and upper wall.

Argamum 2001, FE, C1, -0.80 m. Dm: 24; Hp: 2.9.

Bright brown fabric (2.5 YR 5/8), reddish-brown slip (2.5 YR 4/8).

#### Form H 10C

44. Dish. Rim fragment and upper wall.

Argamum 1987, FE, passim. Dm: 22; Hp: 3.3.

Orange fabric (5 YR 6/8), bright brown slip (5 YR 5/8).

45. Dish. Rim fragment and upper wall.

Argamum 1987, FE, passim. Dm: 26; Hp: 2.4.

Bright brown fabric (2.5 YR 5/8), reddish-brown slip (2.5 YR 4/8).



## References

- BĂDESCU, A., ILIESCU I. 2016. Late Roman pottery discovered at Histria in the Acropolis Centre-South Sector (2015). *Vasa Escaria – Late Roman C Wares. Materiale și Cercetări Arheologice* (serie nouă) 12, 141–157.
- BOGDAN-CĂTĂNICIU, I., BARNEA, A. 1979. Ceramica și descoperiri mărunte. In: A. Barnea, I. Barnea, I. Bogdan-Cătănicu, M. Mărgineanu-Cârstoiu, G. Papuc (eds). *Tropaeum Traiani I. Cetatea*, 177–226. București.
- GĂMUREAC, E. 2009. Edificiul B1 din sectorul B al cetății Tropaeum Traiani. Considerații preliminare privind cercetările din 2005–2008. *Pontica* 42, 243–299.
- ILIESCU et alii 2017. Late Roman C Wares discovered at Histria in the Acropolis Centre-South Sector (2013 and 2014). *Materiale și Cercetări Arheologice* (serie nouă) 13, 47–72.
- MOCANU, M. 2011. Considerații privind ceramica de masă de la (L)Ibida. Studiu de caz. Sectorul Extra muros Vest III. *Peuce S.N.* 9, 225–252.
- MOCANU, M. 2011a. Ceramica romană târzie cu decor șampilat descoperită la (L?)Ibida. *Pontica* 44, 293–309.
- MOCANU, M. 2014. Considerații privind ceramica de masă de la (L)Ibida (II). Sectorul Extra muros Nord I. *Peuce S.N.* 12, 147–168.
- MOCANU, M. 2018. Late Roman tableware from Argamum. *Studia Antiqua et Archaeologica* 24/2, 335–356.
- MOCANU, M. 2018a. Ceramica de masă romană târzie descoperită la Halmyris. *Peuce S. N.* 16, 227–250.
- MOCANU, M., NUȚU, G. 2017. Late Roman red slip ware from Aegyssus. *Novensia* 28, 121–140.
- MUNTEANU, M., PAPUC, G. 1976. La céramique romaine tardive à décors estampés découverte à Tomis. *Pontica* 9, 147–154.
- OPAÎȚ, A. 1996. *Aspecte ale vieții economice din provincia Scythia (secolele IV–VI p.Chr).* Producția ceramicii locale și de import. Bucharest.
- OPRIȘ, I.-C. 2003. *Ceramica romană târzie și paleobizantină de la Capidava în contextul descoperirilor de la Dunărea de Jos (sec. IV–VI p.Chr.)*, București.
- PAPUC, G. 1973. Ceramica romană târzie cu decor șampilat descoperită la edificiul roman cu mozaic de la Tomis. *Pontica* 6, 153–192.
- POPESCU, E. 1965. Ceramica romană târzie cu decor șampilat descoperită la Histria. *Studii și cercetări de istorie veche* 16/4, 695–724.
- RAȚIU, A., OPRIȘ, I.-C., DUDA, M. 2017. Fine Wares from the late roman “Principia” at Capidava (I). *Cercetări Arheologice* 24, 209–227.
- SUCEVEANU, A. 1982. Contribuții la studiul ceramicii romano-bizantine de la Histia. *Studii și cercetări de istorie veche și arheologie* 33/1, 79–108.
- TOPOLEANU, F. 1984. Noi descoperiri arheologice la Isaccea (I). *Peuce* 9, 187–205 (585–596).
- TOPOLEANU, F. 1996. Ceramica romană târzie cu decor șampilat descoperită la Halmyris. *Peuce* 12, 143–168.
- TOPOLEANU, F. 2000. *Ceramica romană și romano-bizantină de la Halmyris (sec. I–VII d.Ch.)*. Tulcea.



© 2020 by the authors; licensee Editura Universității Al. I. Cuza din Iași. This article is an open access article distributed under the terms and conditions of the Creative Commons by Attribution (CC-BY) license (<http://creativecommons.org/licenses/by/4.0/>).